

# CAPPING AND DECAPPING DEVICES

FOR NUCLEAR POWER PLANTS



## Capping and Decapping Device

Special equipment is required to open and close drums and other containers holding contaminated and activated contents. Bilfinger Noell develops capping and decapping devices which enable handling of lids and loosening or tightening of bolts. If desired, custom-tailored solutions also for lid storages and other peripheral devices such as roller conveyors, container transport units etc. may be designed and delivered.

The capping and decapping device can be part of a caisson which is required to remove the lid of empty drums remotely controlled, to dock to the Double Lid System and after filling of the drum to return the lid onto the drum and to transport the drum to the release measurement station. Depending on customer requirements, the capping and de-capping devices are entirely remote-controlled or hand operated. Customer-tailored solutions

are available for a great variety of containers.

### Technical Data:

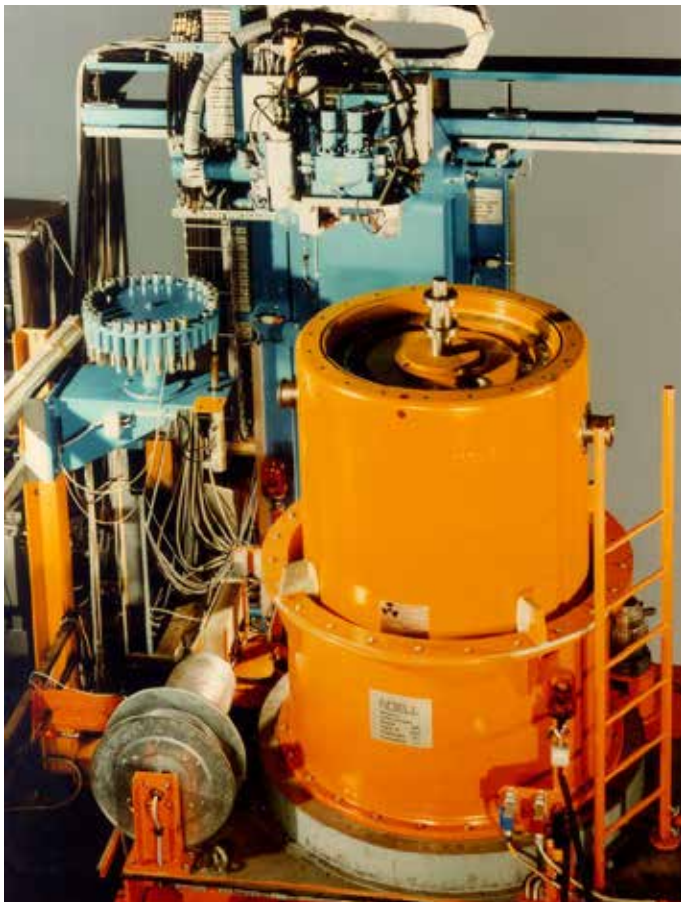
- Drum size: 200 l / 220 l / 400 l
- Weight: up to 1500 kg



**BILFINGER**



Sorting Box



Sorting Box



Sorting Box

## Engineering & Technologies

Bilfinger Noell GmbH  
 Alfred-Nobel-Straße 20 · 97080 Würzburg · Germany  
 Phone: +49 931 903-6003 · Fax +49 931 903-1018  
 noell.nuclear@bilfinger.com · www.noell.bilfinger.com

## References:

- Germany: Physikalische Technische Bundesanstalt, KKW Lingen, WAK Karlsruhe, KKW Grafenrheinfeld, THTR Hamm-Uentrop
- Switzerland: NPP Mühleberg und Leibstadt
- China: KKW Fangchenggang